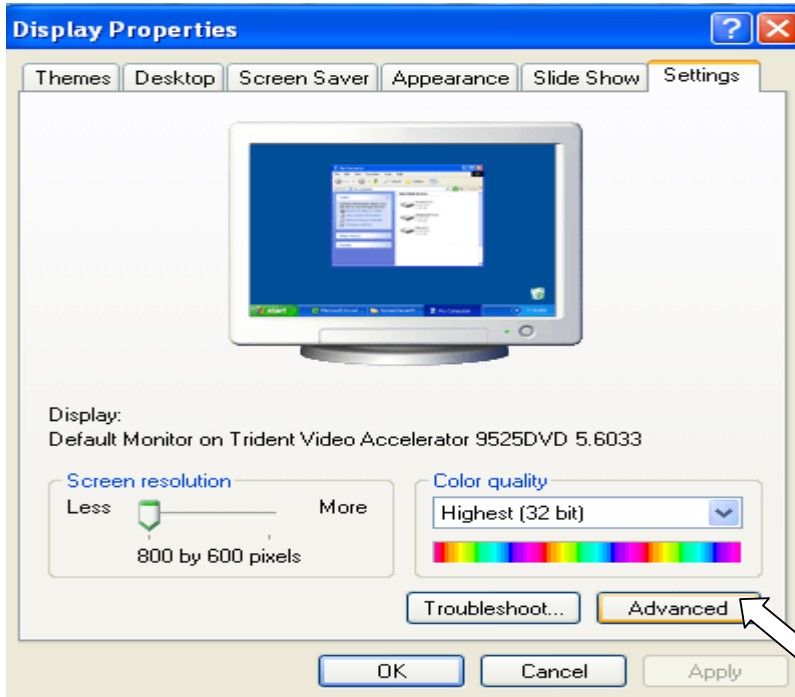
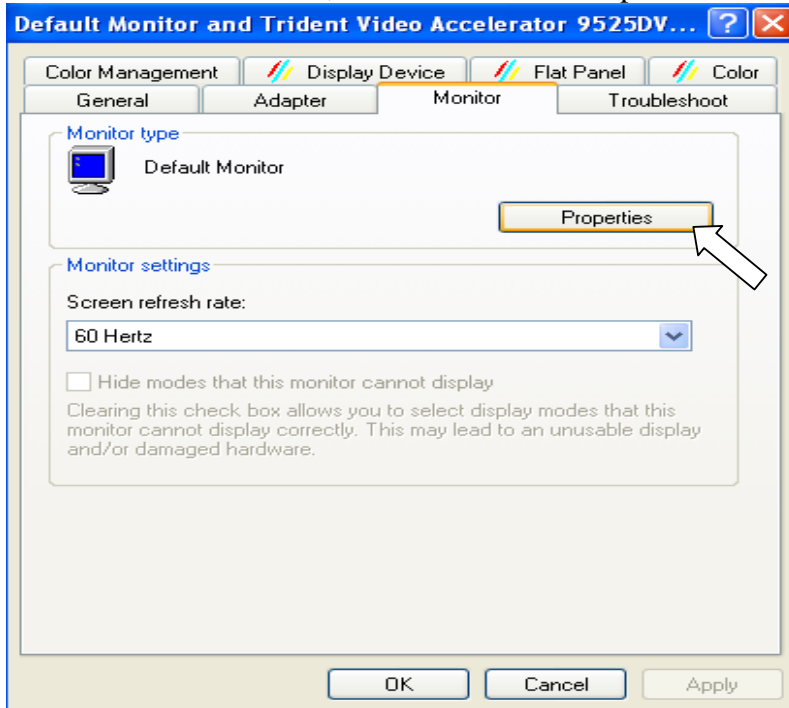


How to install monitor driver for Windows XP

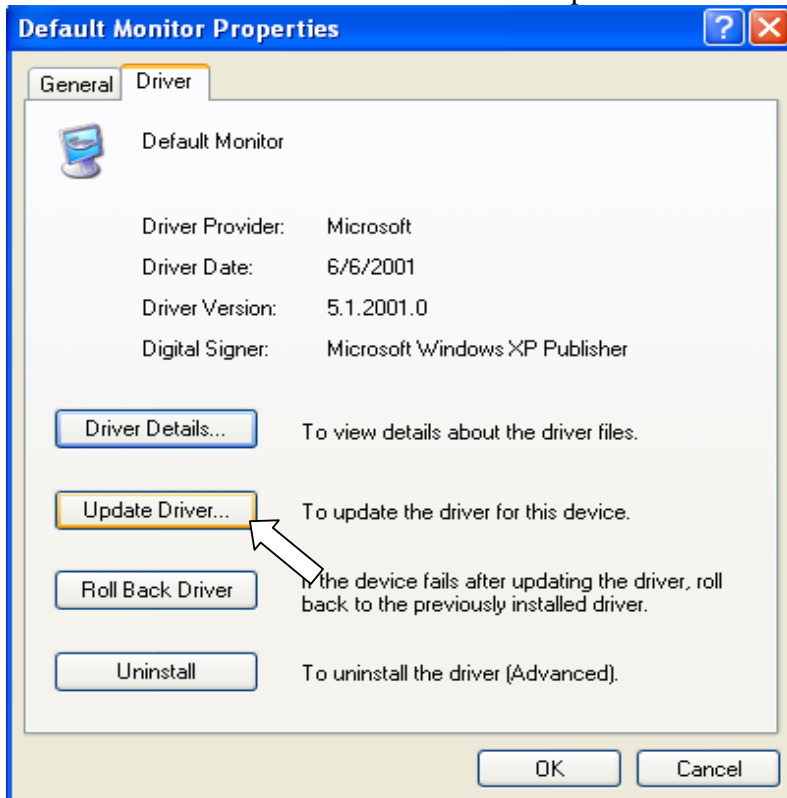
1. Click on “Start” > “Setting” > “Control Panel” > “Display” > “Setting” tab > “Advanced”.



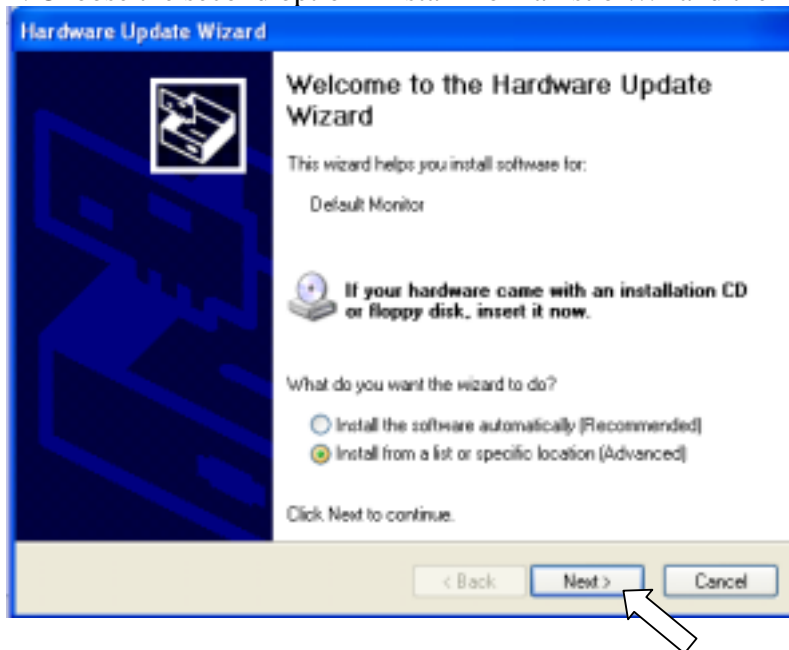
2. Click on “Monitor” tab, and then click on “Properties”.



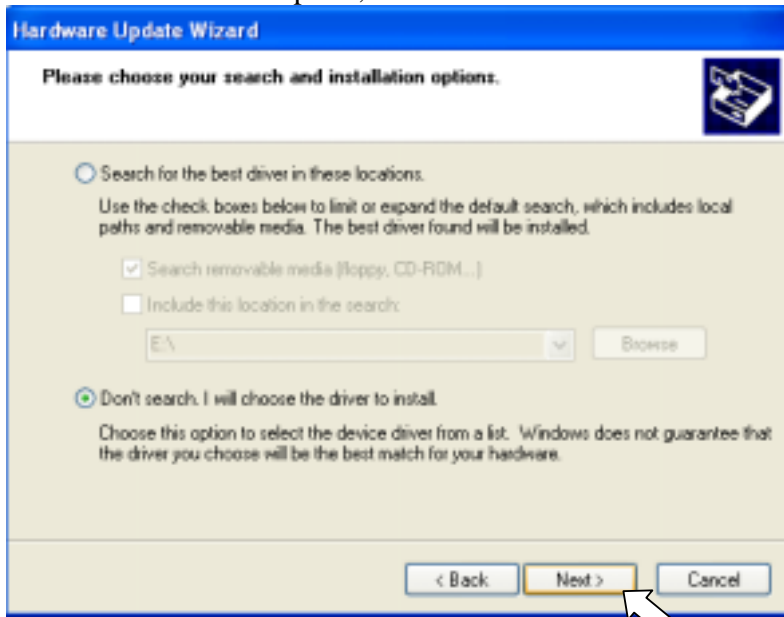
3. Click on “Driver” tab and then click on “Update Driver...”



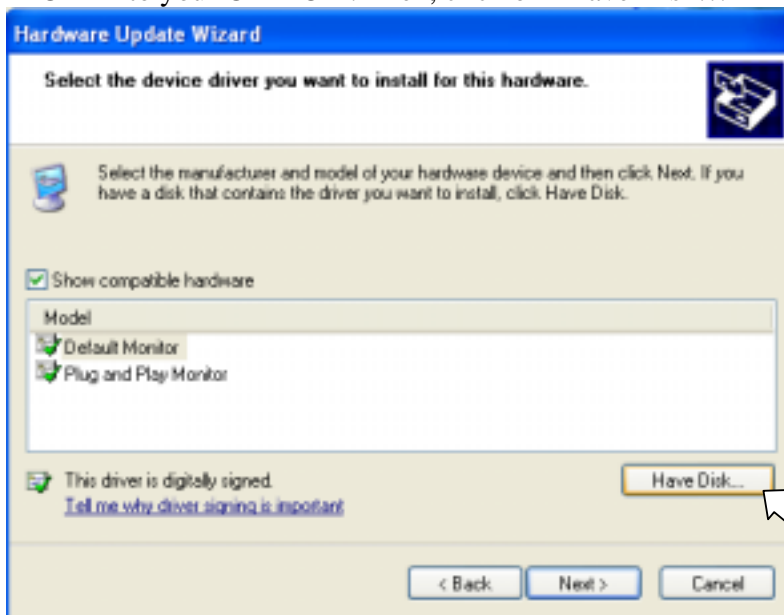
4. Choose the second option “Install from a list or...” and then Click on “Next”.



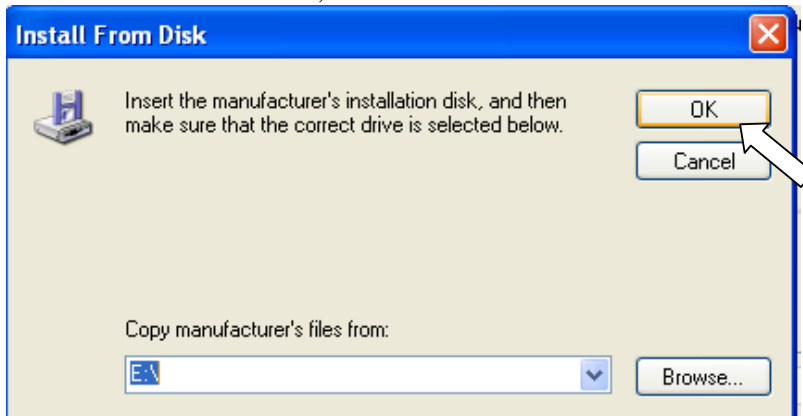
5. Choose the second option, “Don’t search. I will choose...” and then click on “Next”.



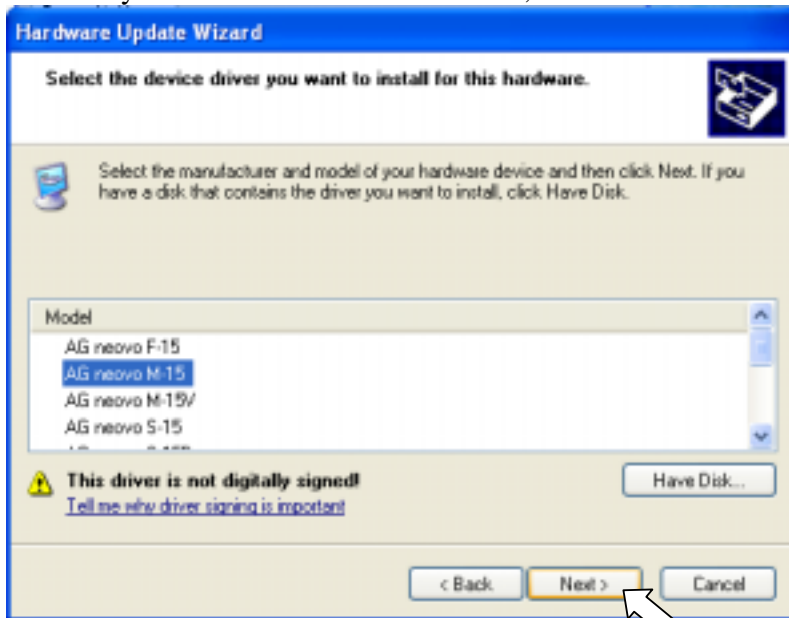
6. Select “Show compatible hardware”. And insert the provided CD named “Installation CD” into your CD-ROM. Then, click on “Have Disk...”



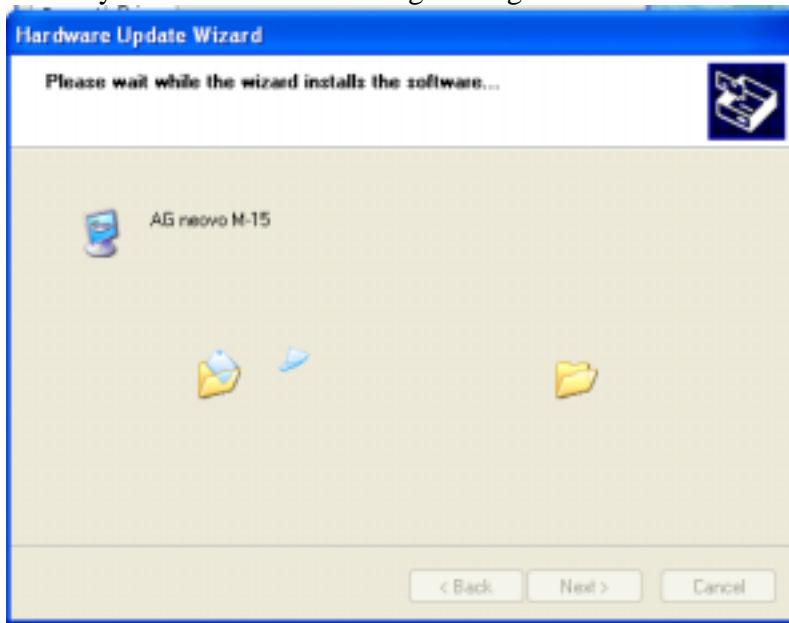
7. Select CD-ROM drive, and then click on “OK”



8. Select your monitor from the list. Then, click on “Next”



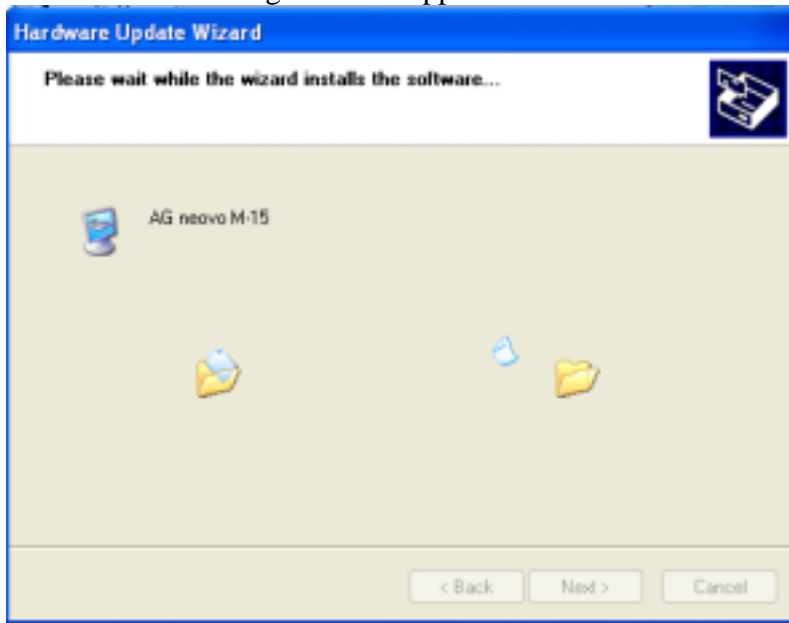
9. And you will see the following message.



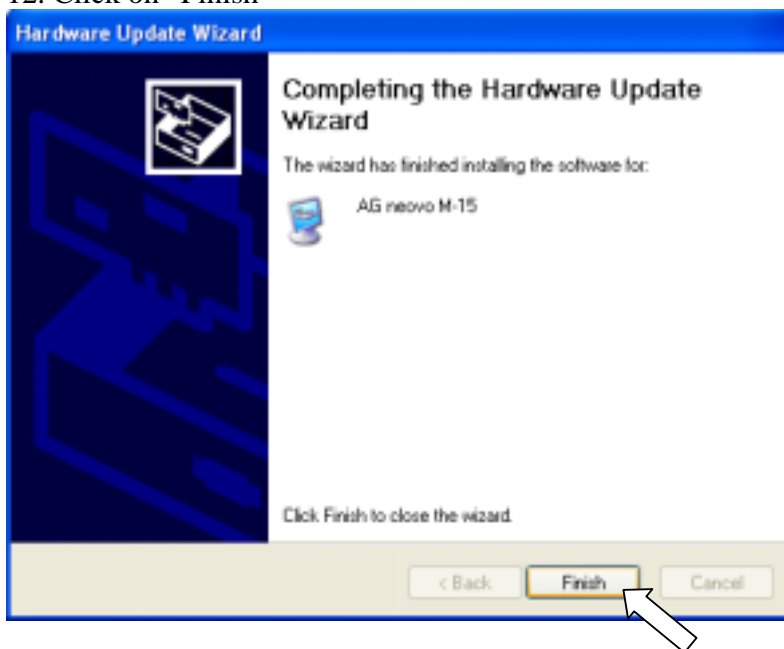
10. Click on "Continue Anyway"



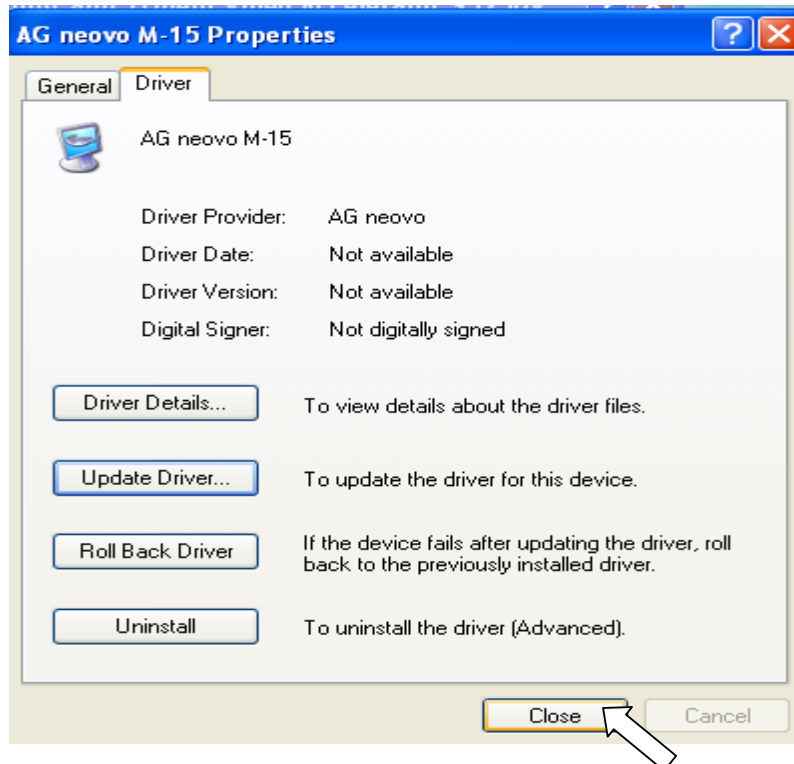
11. And the following windows appears.



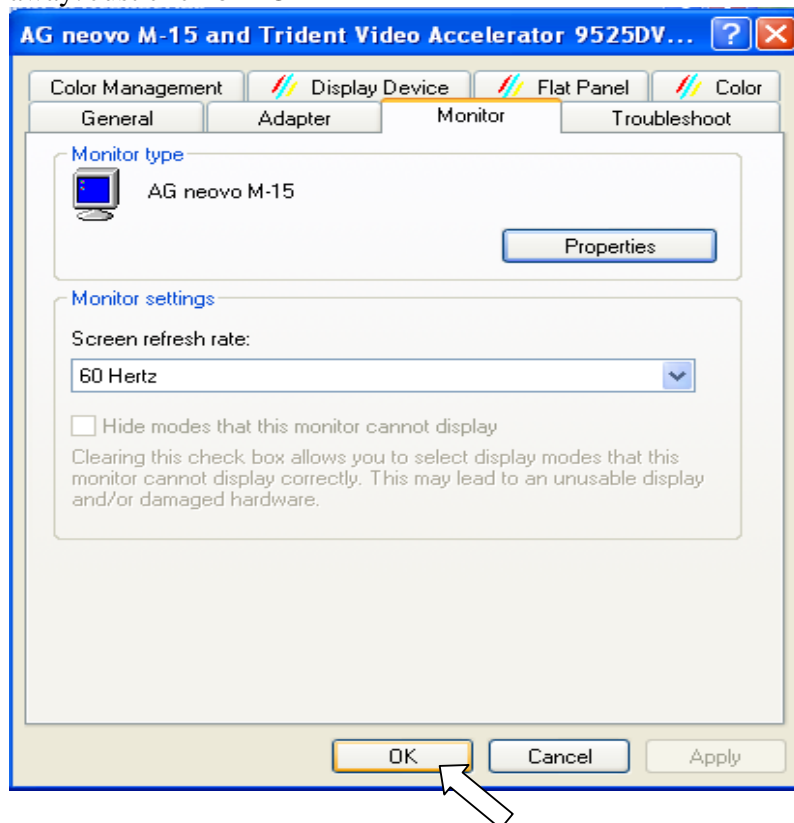
12. Click on "Finish"



13. Click on “Close”



14. When you go back to Monitor Tab, it doesn't show the new Monitor Model right away. Just click on “OK”



15. And you will see the updated Monitor Model.

